

Judy Chicago
Early Work and Pre-Feminist

Works in the
Jordan Schnitzer Family Foundation

Early Work - Pre-Feminist

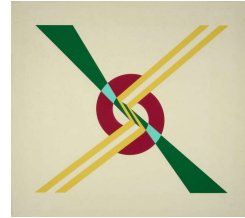
#1 *Flashback 39/40*

1965

Serigraph

20 x 26 in. (50.8 x 66.04 cm)

11038.E.39



#2 *Flashback, version 2, 36/40*

1965

Serigraph

20 x 26 in. (50.8 x 66.04 cm)

11039.E



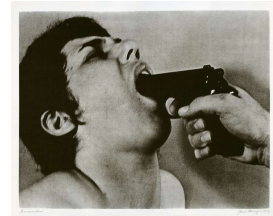
#3 *Gunsmoke*

1971

Offset photo-lithograph

17.5 x 21.5 in. (44.45 x 54.61 cm)

11483.Unnumbered



#4 *Love Story*

1971

Offset Photo Lithography on paper

16.25 x 12.5 in. (41.28 x 31.75 cm)

11482.Unnumbered.6



#5 *Red Flag, Artist Proof 5*

1971

Photo-lithograph

20 x 24 in. (50.8 x 60.96 cm)

10244.AP.5



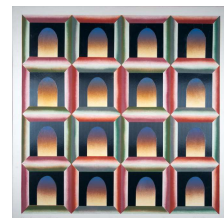
#6 *Silver Doorways Proof I*

1972

Hand-colored lithograph with collage on Rives BFK

22 x 22 in. (55.88 x 55.88 cm)

10320.Proof I



Early Work - Pre-Feminist

#7 *Through the Flower: Title Page, 8/10*

1972

Lithograph on paper

22 x 22 in. (55.88 x 55.88 cm)

Current Location: Collector : Jordan Schnitzer Family Foundation

10623.E.8



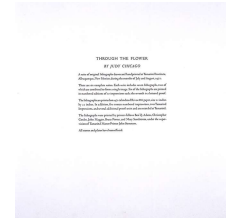
#8 *Through the Flower: Colophon Page*

1972

Lithograph on paper

22 x 22 in. (55.88 x 55.88 cm)

10621.E.8



#9 *Through the Flower #3, Artist's proof*

1972

Lithograph on Rives BFK

22 x 22 in. (55.88 x 55.88 cm)

10368.AP.1



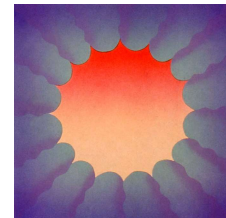
#10 *Through the Flower #4, 8/10*

1972

Lithograph on Rives BFK

22 x 22 in. (55.88 x 55.88 cm)

10369.E.8



#11 *Through the Flower Twice, 6/10*

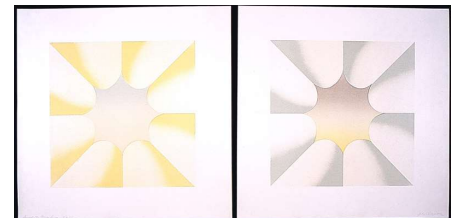
1972

Lithograph on paper

22 x 22 in. (55.88 x 55.88 cm)

Diptych. Each image 15 x 15 in.; Paper size 22 x 22 in.

10457.E.6.a-b



#12 *Through the Flower 65/100*

1991

Serigraph

31 x 30.5 in. (78.74 x 77.47 cm)

10852.E.65



Early Work - Pre-Feminist

#13 *Through the Flower* 1/25

2006

digital print on Arches

11 x 11 in. (27.94 x 27.94 cm)

11232.E.1



#14 *Mary Queen of Scots* AP 1

1973

Lithograph and serigraph on Copperplate Deluxe

25 x 25 in. (63.5 x 63.5 cm)

Image size 20 x 20 in.; Paper size 22 x 22 in.

11043.AP.1



#15 *Marie Antoinette*

1973/2017

Four-color stone lithograph on cotton paper

25 x 25 in. (63.5 x 63.5 cm)

12243.AP.3



#16 *Potent Pussy/Homage to Lamont - Boxed Set* 7/7

1973

Lithograph

12.5 x 12.5 x 1.5 in. (31.75 x 31.75 x 3.81 cm)

Plexiglas case containing nine lithographs

11303.E.7



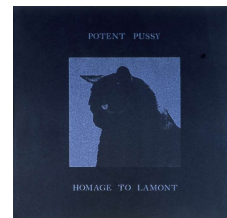
#17 *Potent Pussy/Homage to Lamont - Cover* 7/7

1973

Lithograph

12 x 12 in. (30.48 x 30.48 cm)

10607.E.7



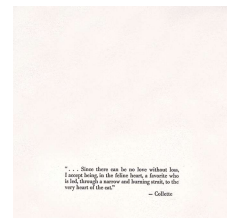
#18 *Potent Pussy/Homage to Lamont - Quote* 7/7

1973

Lithograph

12 x 12 in. (30.48 x 30.48 cm)

10608.E.7



Early Work - Pre-Feminist

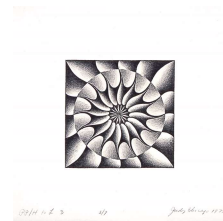
#19 *Potent Pussy/Homage to Lamont 1 7/7*

1973

Lithograph

12 x 12 in. (30.48 x 30.48 cm)

10609.E.7



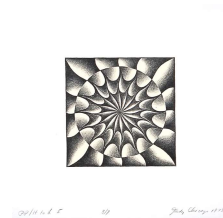
#20 *Potent Pussy/Homage to Lamont 2 7/7*

1973

Lithograph

12 x 12 in. (30.48 x 30.48 cm)

10610.E.7



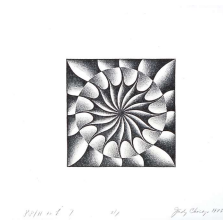
#21 *Potent Pussy/Homage to Lamont 3 7/7*

1973

Lithograph

12 x 12 in. (30.48 x 30.48 cm)

10611.E.7



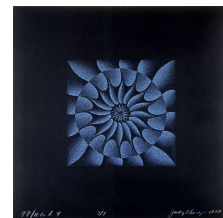
#22 *Potent Pussy/Homage to Lamont 4 7/7*

1973

Lithograph

12 x 12 in. (30.48 x 30.48 cm)

10612.E.7



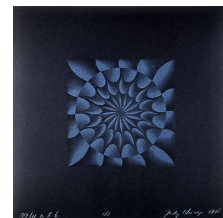
#23 *Potent Pussy/Homage to Lamont 5 7/7*

1973

Lithograph

12 x 12 in. (30.48 x 30.48 cm)

10613.E.7



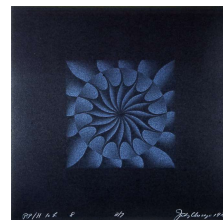
#24 *Potent Pussy/Homage to Lamont 6 7/7*

1973

Lithograph

12 x 12 in. (30.48 x 30.48 cm)

10614.E.7



Early Work - Pre-Feminist

#25 *Potent Pussy/Homage to Lamont - Colophon 7/7*

1973

Lithograph

12 x 12 in. (30.48 x 30.48 cm)

10615.E.7



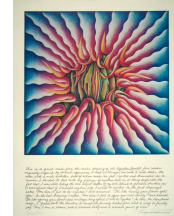
#26 *Peeling Back 84/95*

1974

Offset Lithography on rag paper

28.5 x 22 in. (72.39 x 55.88 cm)

10658.E.84



#27 *Butterfly Vagina Erotica, 2/15, Complete Suite*

1975

Lithograph on Buff Arches

Four 10 x 10 in. prints and a cover 11 x 22 in.

10918.ES.2



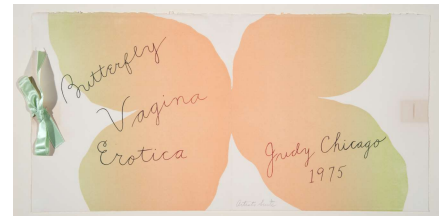
#28 *Butterfly Vagina Erotica, Cover*

1975

Lithograph on Buff Arches

11" x 22"

10918.AS.Cover



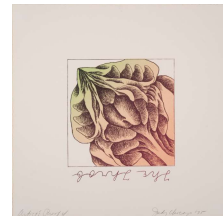
#29 *Butterfly Vagina Erotica, The Throb*

1975

Lithograph on Buff Arches

10 x 10 in. (25.4 x 25.4 cm)

10918.AS.AP4



#30 *Butterfly Vagina Erotica, The Contact*

1975

Lithograph on Buff Arches

10 x 10 in. (25.4 x 25.4 cm)

10918.AS.AP3



Early Work - Pre-Feminist

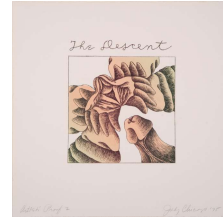
#31 *Butterfly Vagina Erotica, The Descent*

1975

Lithograph on Buff Arches

10 x 10 in. (25.4 x 25.4 cm)

10918.AS.AP2



#32 *Butterfly Vagina Erotica, The Approach*

1975

Lithograph on Buff Arches

10 x 10 in. (25.4 x 25.4 cm)

10918.AS.AP1



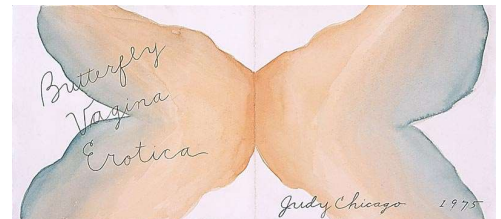
#33 *Study for Butterfly Vagina Erotica, Cover*

1975

Watercolor on paper

10.5 x 22 in

11017.a



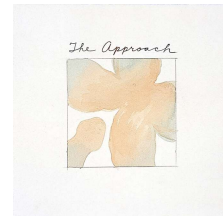
#34 *Study for Butterfly Vagina Erotica - The Approach*

1975

Watercolor on paper

10 x 10 in. (25.4 x 25.4 cm)

11017.b



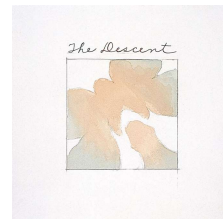
#35 *Study for Butterfly Vagina Erotica - The Descent*

1975

Watercolor on paper

10 x 10 in. (25.4 x 25.4 cm)

11017.c



#36 *Study for Butterfly Vagina Erotica - The Contact*

1975

Watercolor on paper

10 x 10 in. (25.4 x 25.4 cm)

11017.d



Early Work - Pre-Feminist

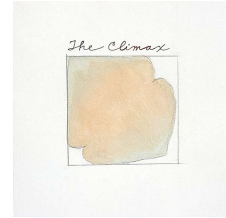
#37 *Study for Butterfly Vagina Erotica - The Climax*

1975

Watercolor on paper

10 x 10 in. (25.4 x 25.4 cm)

11017.e



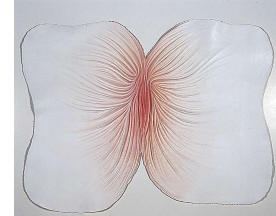
#38 *Study for Submerged/Emerged #1*

1976/2005

Sprayed acrylic on cast paper

34 x 44 in. (86.36 x 111.76 cm)

10762



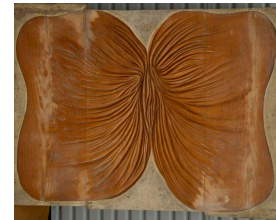
#39 *Wooden mold for Submerged/Emerged*

1976

Wood

36 x 46.75 x 3.5 in. (91.44 x 118.75 x 8.89 cm)

11236



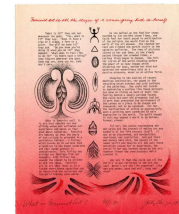
#40 *What is Feminist Art? 92/120*

1977

Lithograph

12.5 x 10 in. (31.75 x 25.4 cm)

10933.E.92



#41 *The Dream of The Dinner Party (Permanent Housing)*

1979

Offset Lithograph

36 x 24 in. (91.44 x 60.96 cm)

11042.E.1



#42 *Reaching/Uniting/Becoming Free 54/100*

1979

Serigraph

41 x 28 in. (104.14 x 71.12 cm)

10919.E.54



Early Work - Pre-Feminist

#43 *With No Immediate Cause*

1981

Offset lithograph

17 x 11 in

12455

